

# NX Studio

Unleashing Your Workflow

VINCENT VERSACE



**NIKON AMBASSADOR**  
UNITED STATES

Where to download the how to set NX Studio

[www.versacephotography.com/nxstudio](http://www.versacephotography.com/nxstudio)

Email me here if you have any answers that need to be questioned

[vincent@versacephotography.com](mailto:vincent@versacephotography.com)

Follow me on Instagram



Make things as simple as possible. But no simpler.

Albert Einstein

# Core Tenets of Image Optimization

**ten·et /'tenət/ (noun)**

noun: tenet; plural noun: tenets

a principle or belief, especially one of the main principles of a religion or philosophy.

Premature optimization is  
the root of all of an image's evil.

The “cleanest” data state an image file will ever be in is when it is first opened a RAW processor before any image editing has occurred

Any time you do anything to a file after RAW processing you clip data. Anytime you clip data you cause artifacting.



**ALL** artifacting is cumulative and may be  
multiplicative

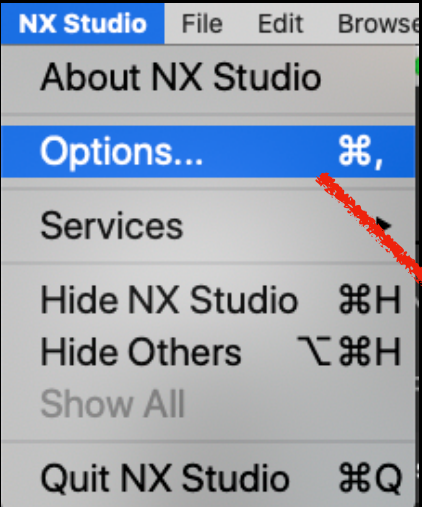
Treat RAW files the same way handle  
piecrust dough.

Touch them as gently and as little as  
possible.

Premature optimization is  
the root of all of an image's evil.

# Setting Up Options in NX Studio

# NX Studio: Setting Up Options

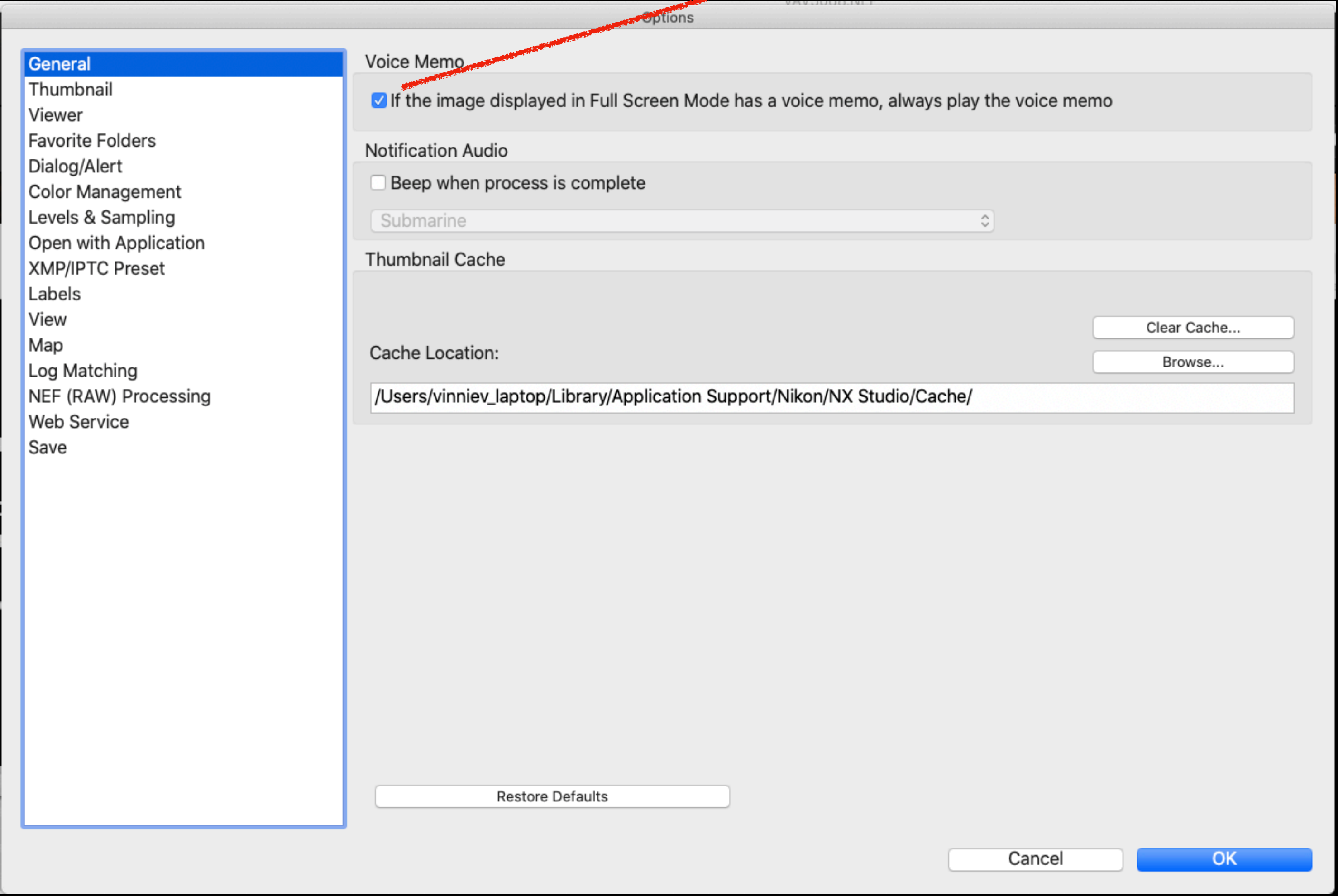


- 1) Launch NX Studio.
- 2) Go to NX Studio, located in the pulldown menu bar at the top of the application.
- 3) Select "Options..." (Command+, / Control+,)

## 4) In General

Select the radio box: on.  
"If Full Screen Mode has a voice memo, always play the voice memo"

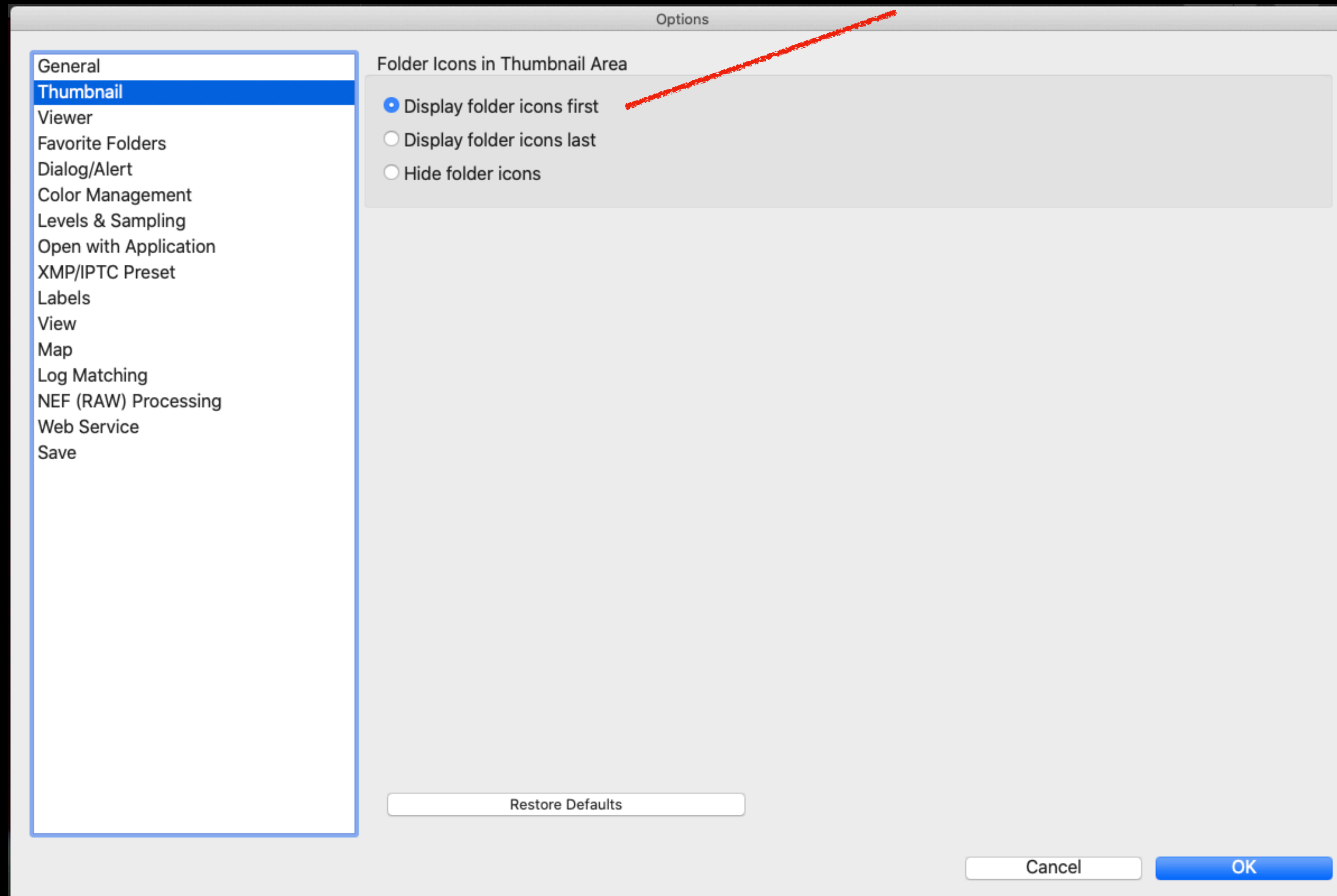
NOTE: The reason - If you took the time to make a voice memo - there was a reason.



## 5) In Thumbnail

Switch from “Display Folders Last” to “Display Folders First”.

NOTE: The reason you want to do this is if there is a combination of images and folders (i.e. the Desktop or an external hard drive) it is the the losers that contain your raw files that matter most.



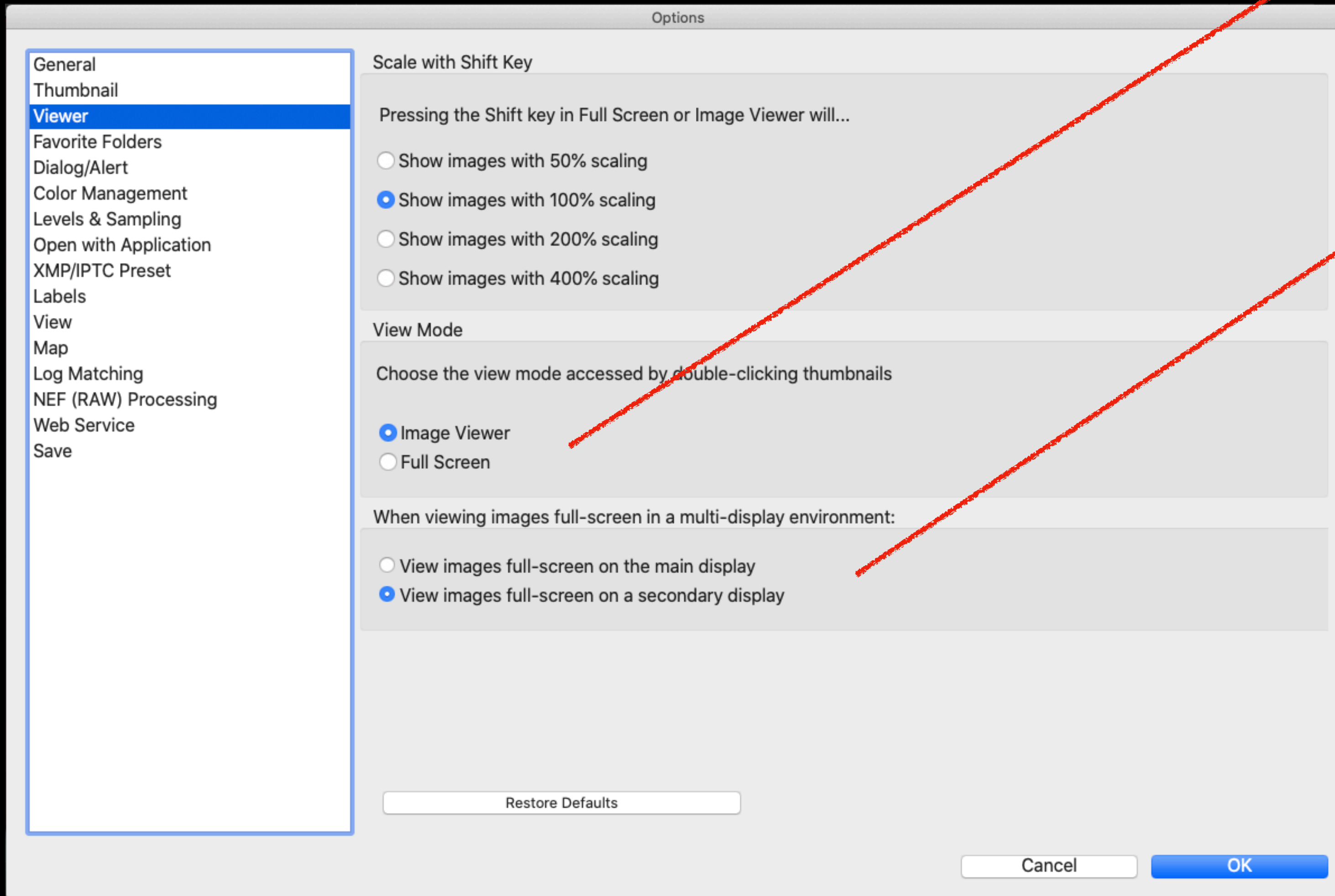
## 6) In Viewer:

Switch from “Chose the view mode accessed by double-clicking thumbnails” from “Image Viewer” to “Full Screen”.

NOTE: The reason you want to do this is when you are view images during the edit process double clicking on a thumbnail grid is they way yo start as well as when you are choosing images to work on after you have rated your selects.

7) Leave “View image full screen on secondary display” as the default.

NOTE: The workflow I recommend is to use your second display as the “Color Approval” monitor. The means that the monitor that has the largest color gamut and highest resolution is the one used to make color decisions.

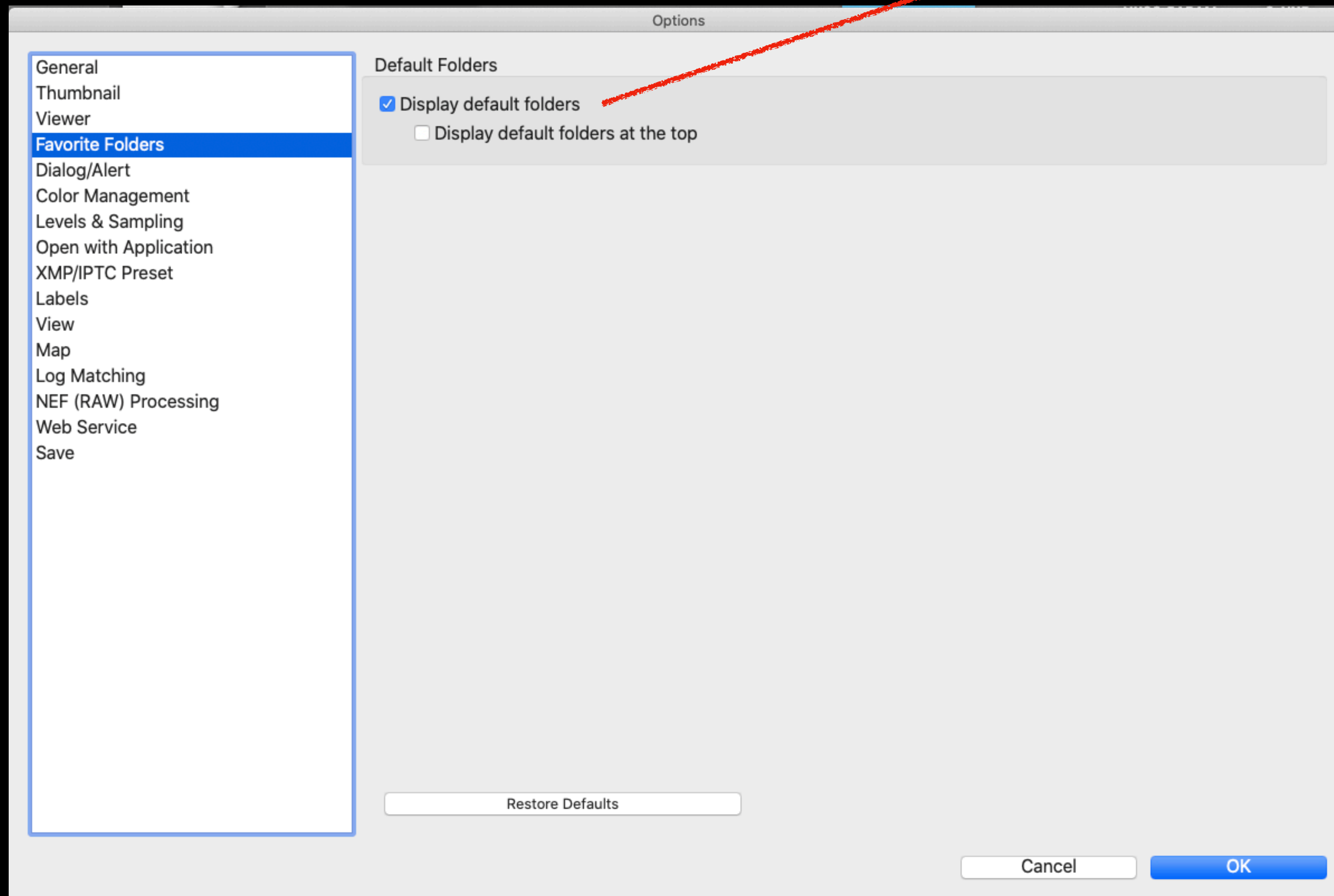


## 8) Default Folders

“Display default folders” - Selected

“Display default folders at top” Unchecked

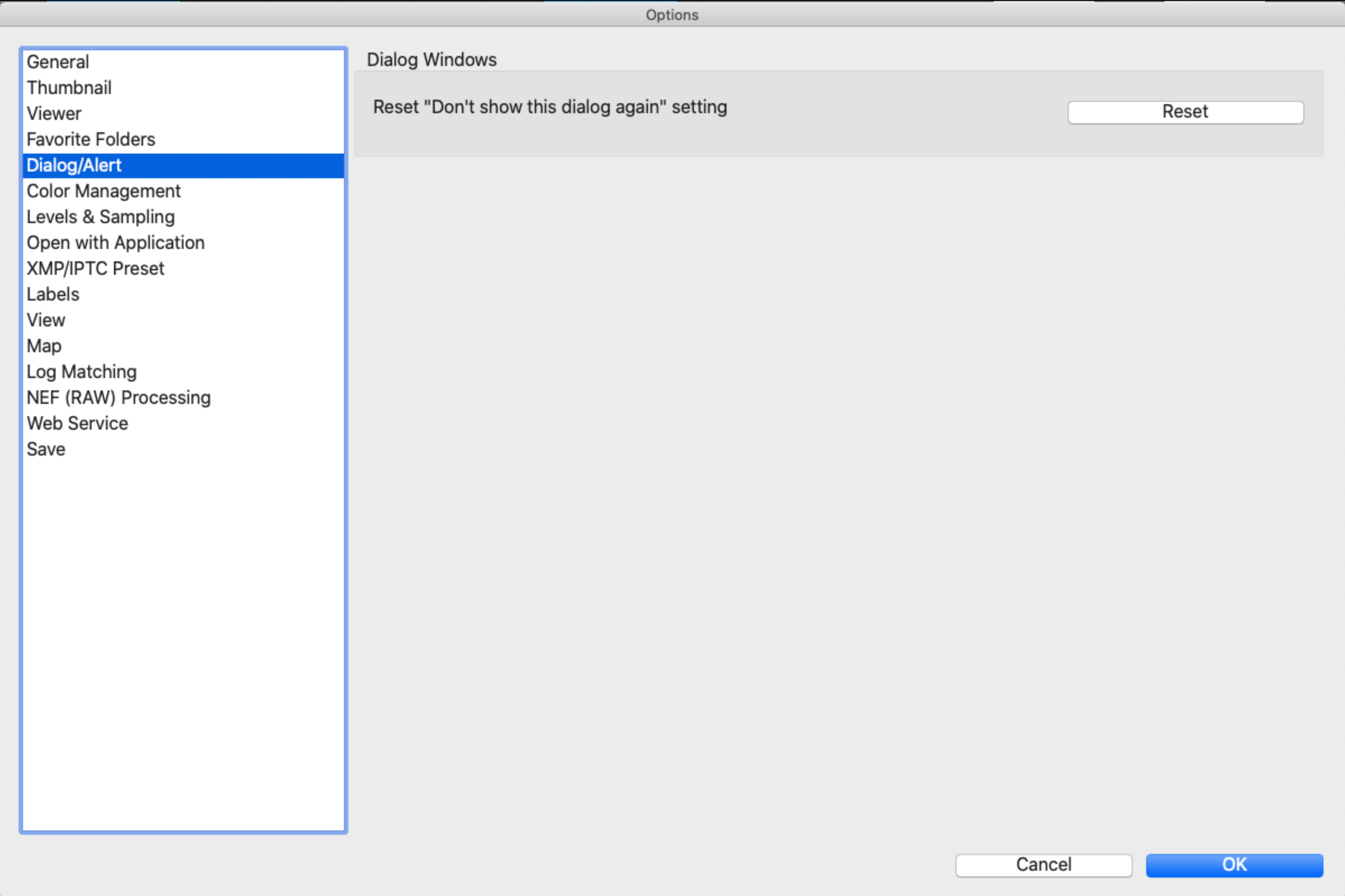
NOTE: This allows you to see the folders you put in the Favorites first. For example I have a folder on the desktop called “ALIAS” in which I have an alias for all of the external hard drives that I will connect to my computer and another called “RAW\_REVIEW/TRANSFER.” I transfer and rename files using “Import” to the “RAW\_REVIEW/TRANSFER” folder and access files I want to work on if stored on external drives from the “ALIAS” folder.





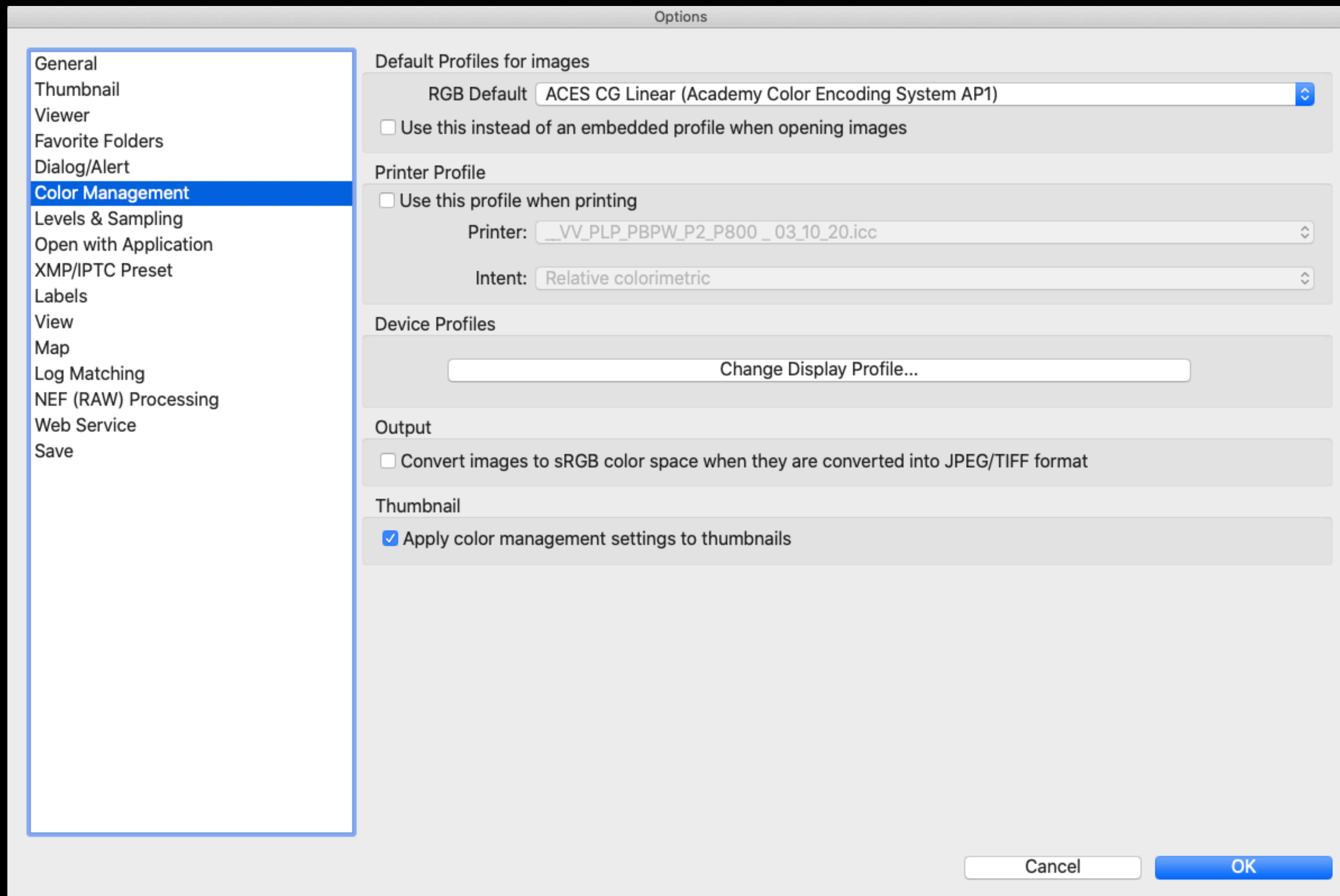
## 9) Dialog Windows

Leave at the default setting



## 10) Color management.

Leave at the default setting.

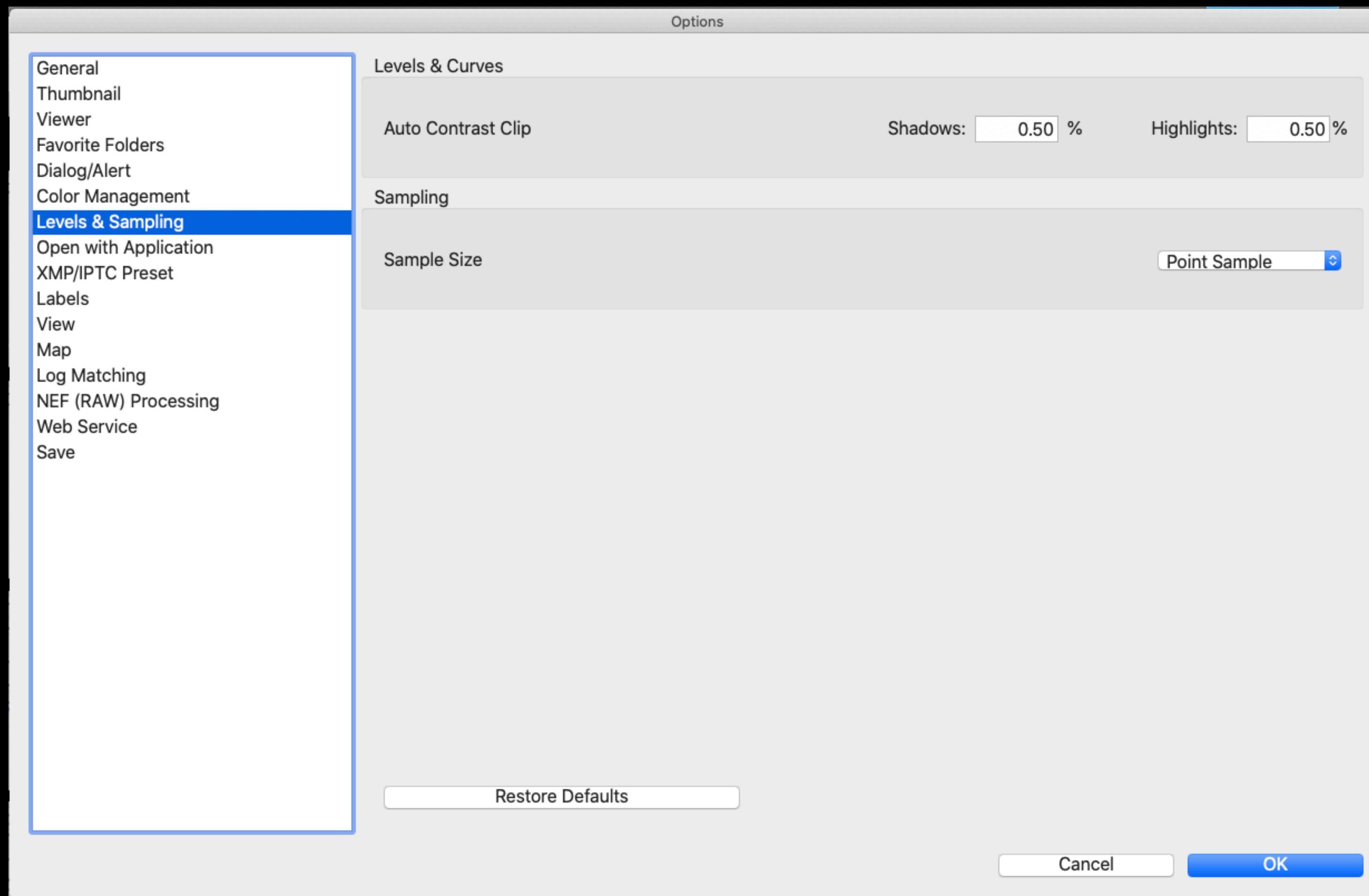


## 11) Levels & Sampling

“Auto Contrast Clip” - leave at default setting

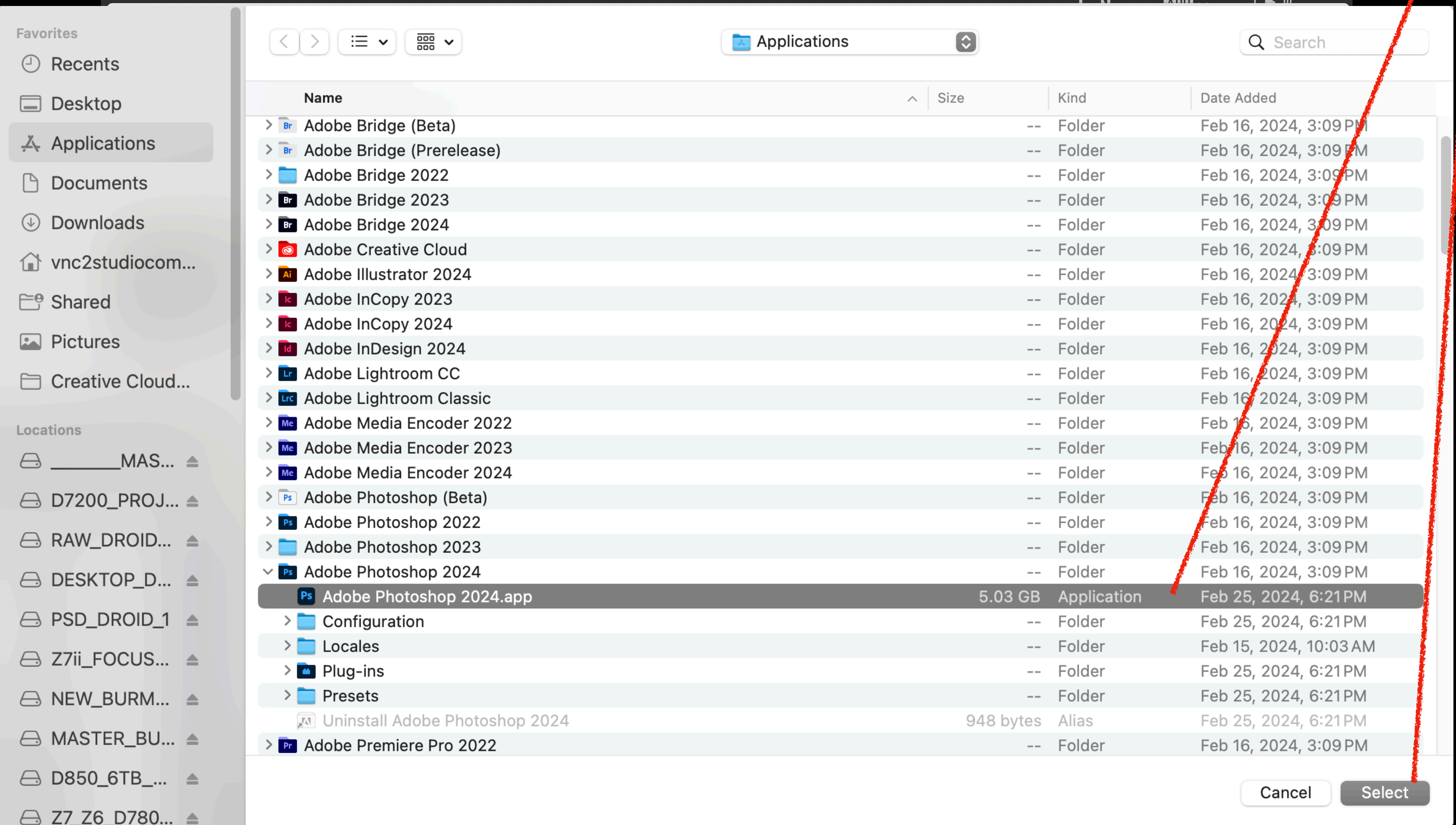
Sample Size - leave at default

“Point Sample”





# NX Studio: Setting Up Options



13) Navigate to Applications > Adobe Photoshop folder > Select Photoshop application

14) Click the "Select" radial button.

Photoshop is now added to the "Open With "Open with Applications" dialog box.

15) Repeat steps 13 & 14 to add Lightroom (if that is your preferred image editing application) or another application you like.

# Photoshop, Lightroom & Premier

Are now added to the "Open With" "Open with Applications" dialog box

Options

Items will be added to Open With menu

Name	Location
Adobe Photoshop 2024.app	/Applications/Adobe Photoshop 2024:
Adobe Photoshop (Beta).app	/Applications/Adobe Photoshop (Beta):
Adobe Lightroom.app	/Applications/Adobe Lightroom CC:
Adobe Premiere Pro 2024.app	/Applications/Adobe Premiere Pro 2024:

Remove Add...

Destination for Files Opened in Other Applications

Browse...

/Users/vnc2studiocomputer/Pictures

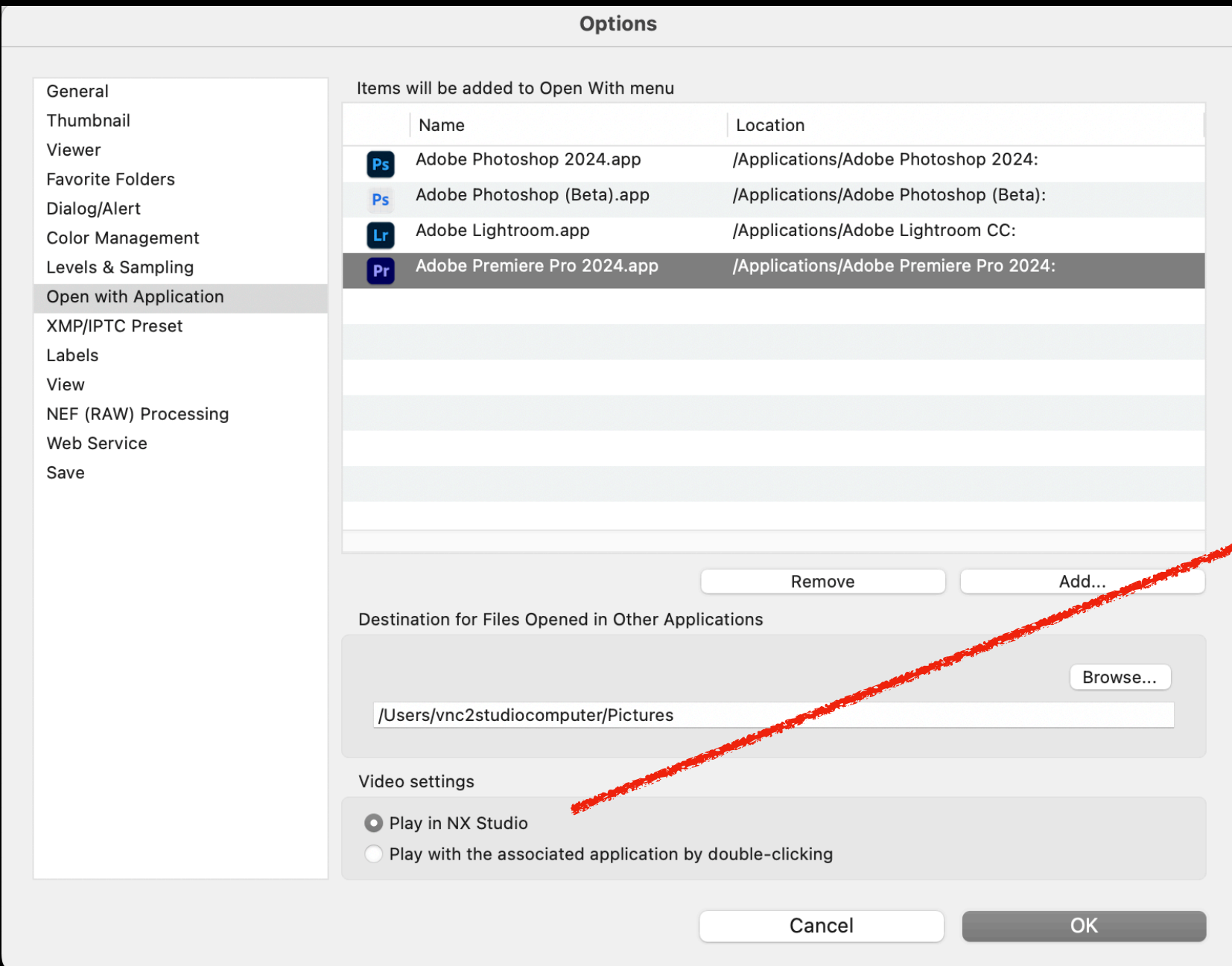
Video settings

Play in NX Studio

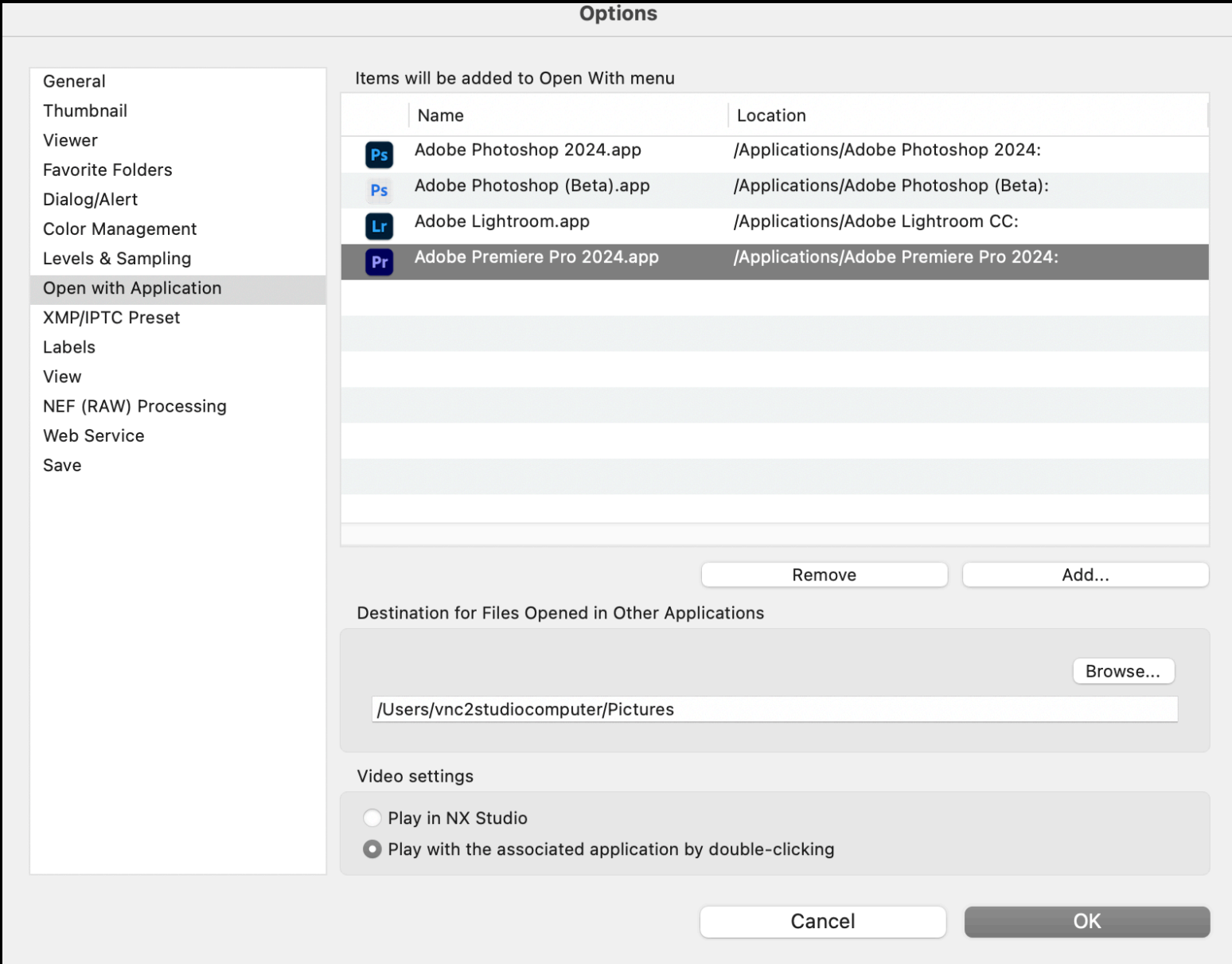
Play with the associated application by double-clicking

Cancel OK

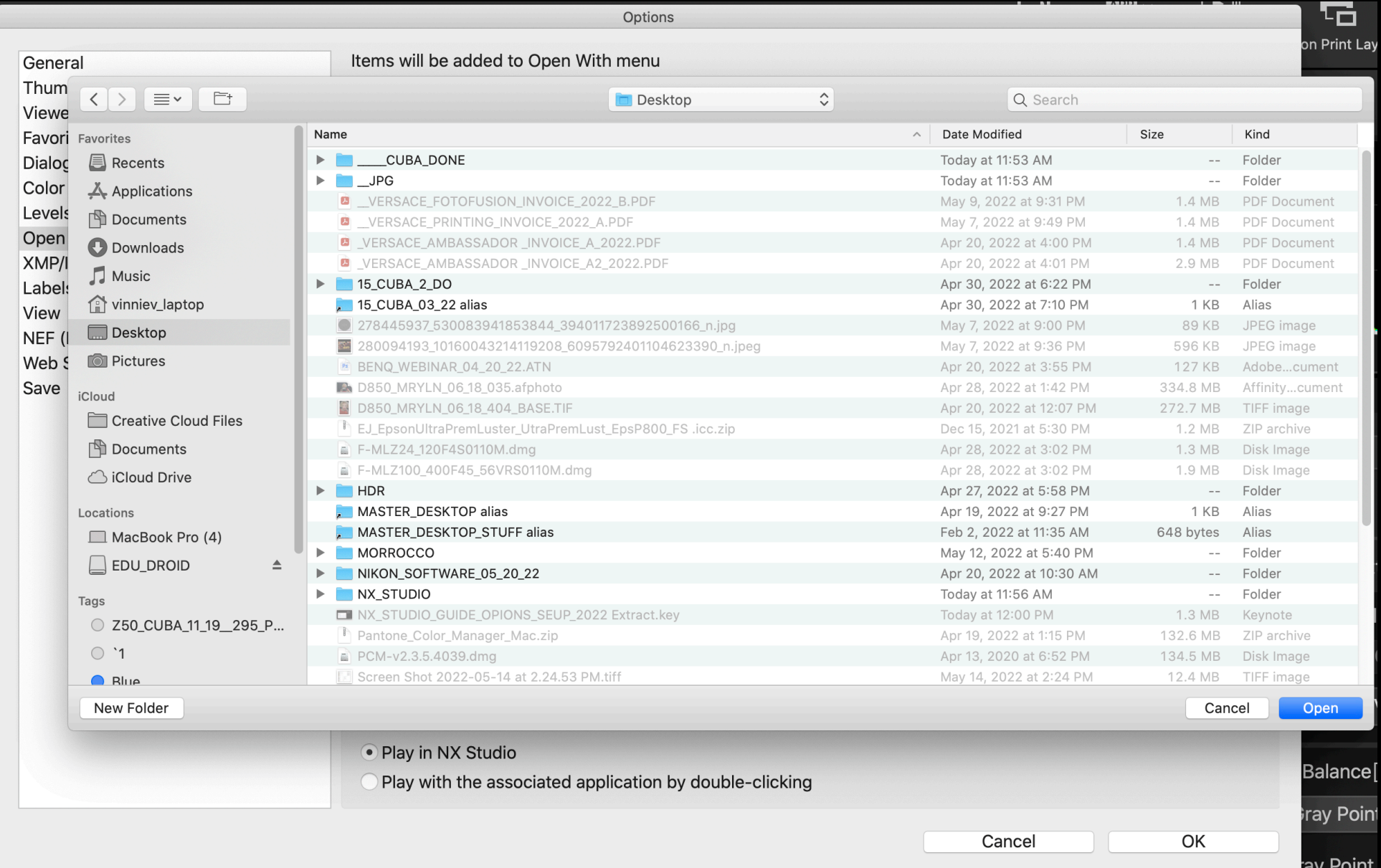
# NX Studio: Setting Up Options



16) Change the destination for “Files Opened in Other Applications” to your preferred destination. (I recommend the Desktop”)



17) Change Video Settings from “Play in NX Studio” to “Play with the associated application”

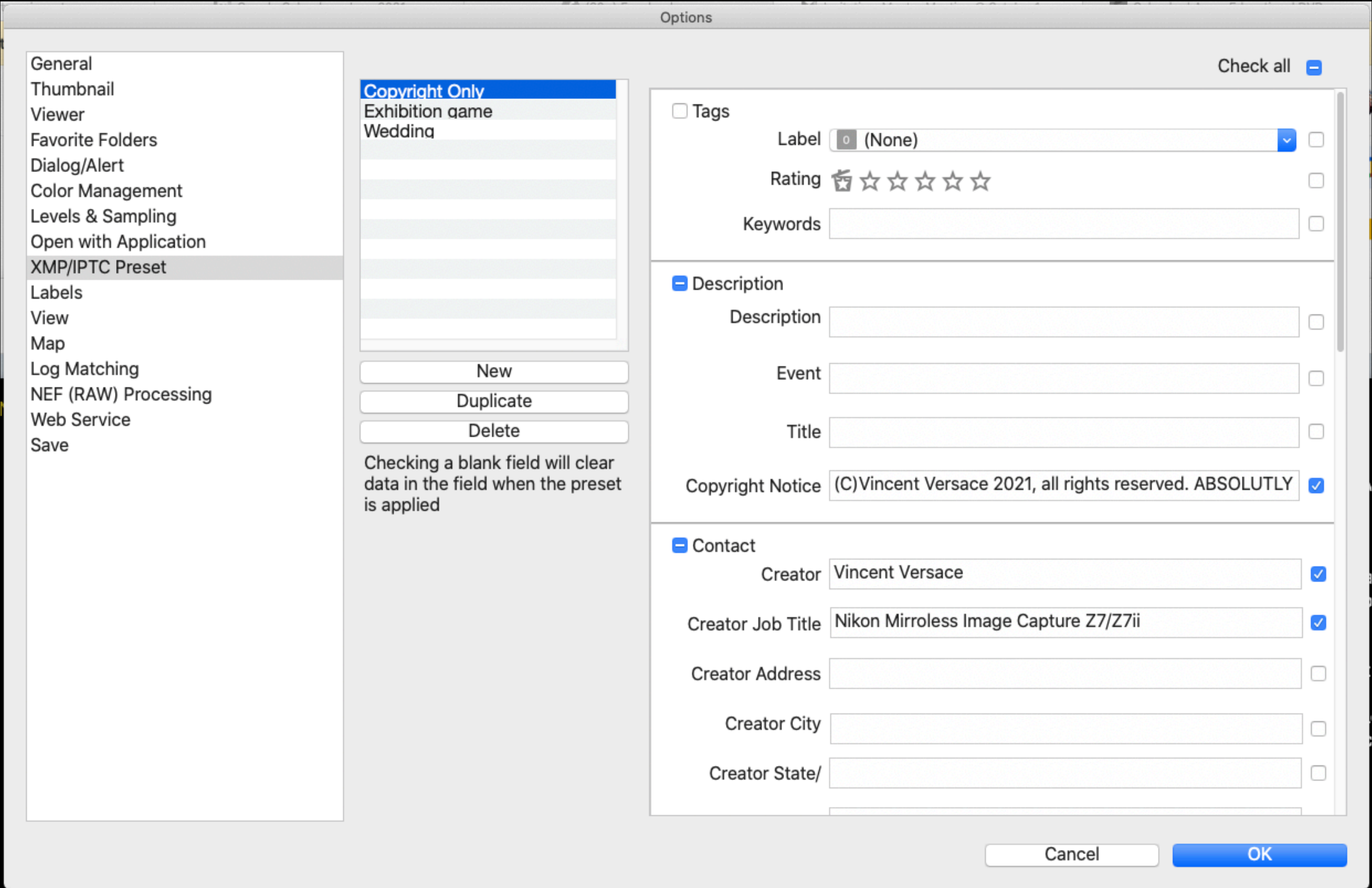


# 18) In "XMP/IPTC Preset"

in the "Copyright Only" dialog box

Fill in all of the information that is global to all project.

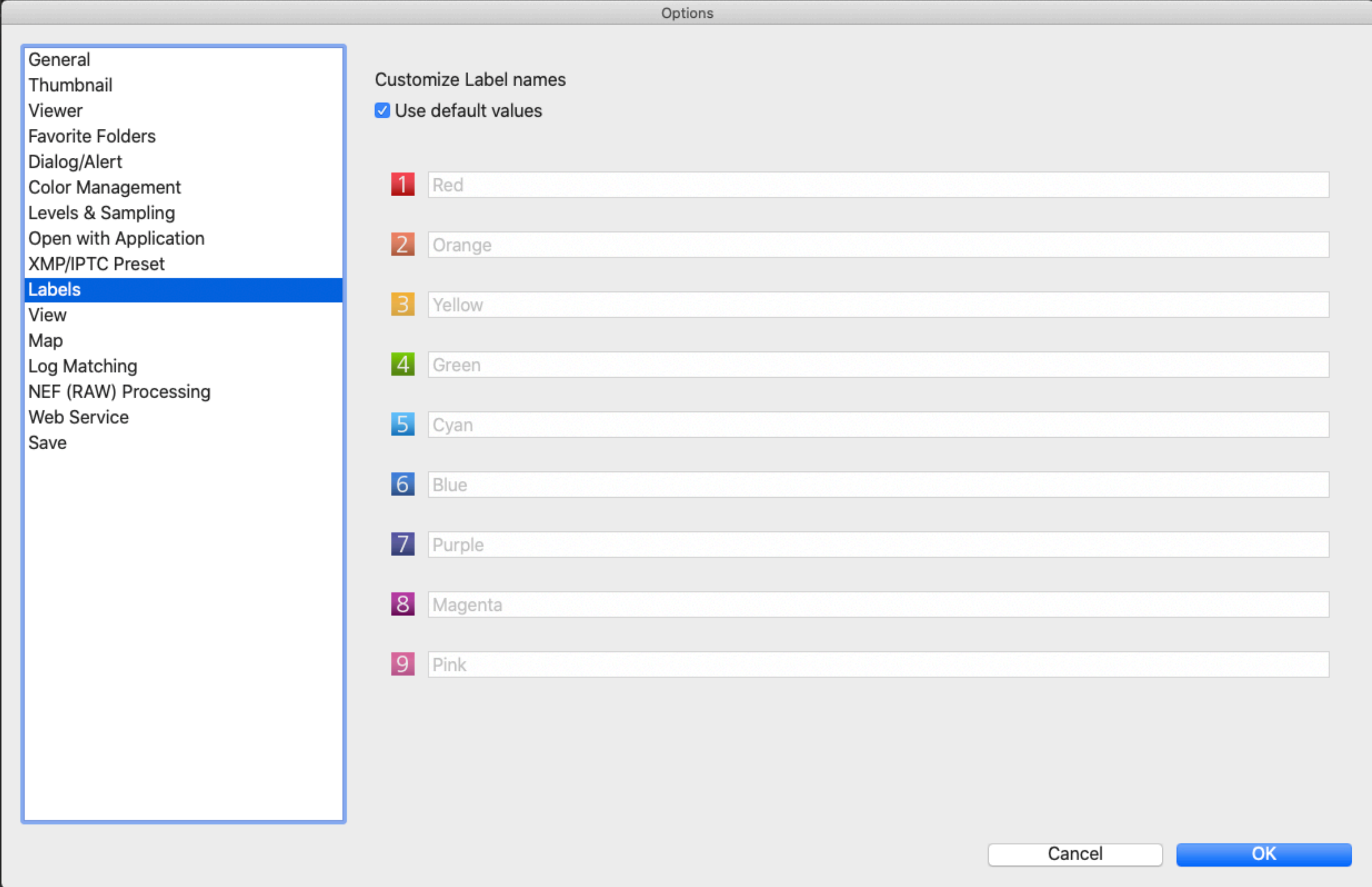
NOTE: This will be the basis for any "specific" Presets you choose to create. You duplicate the Copyright only then add the keywords and and specific descriptions/captions and then give the new preset a meaningful name.





# 19) Labels

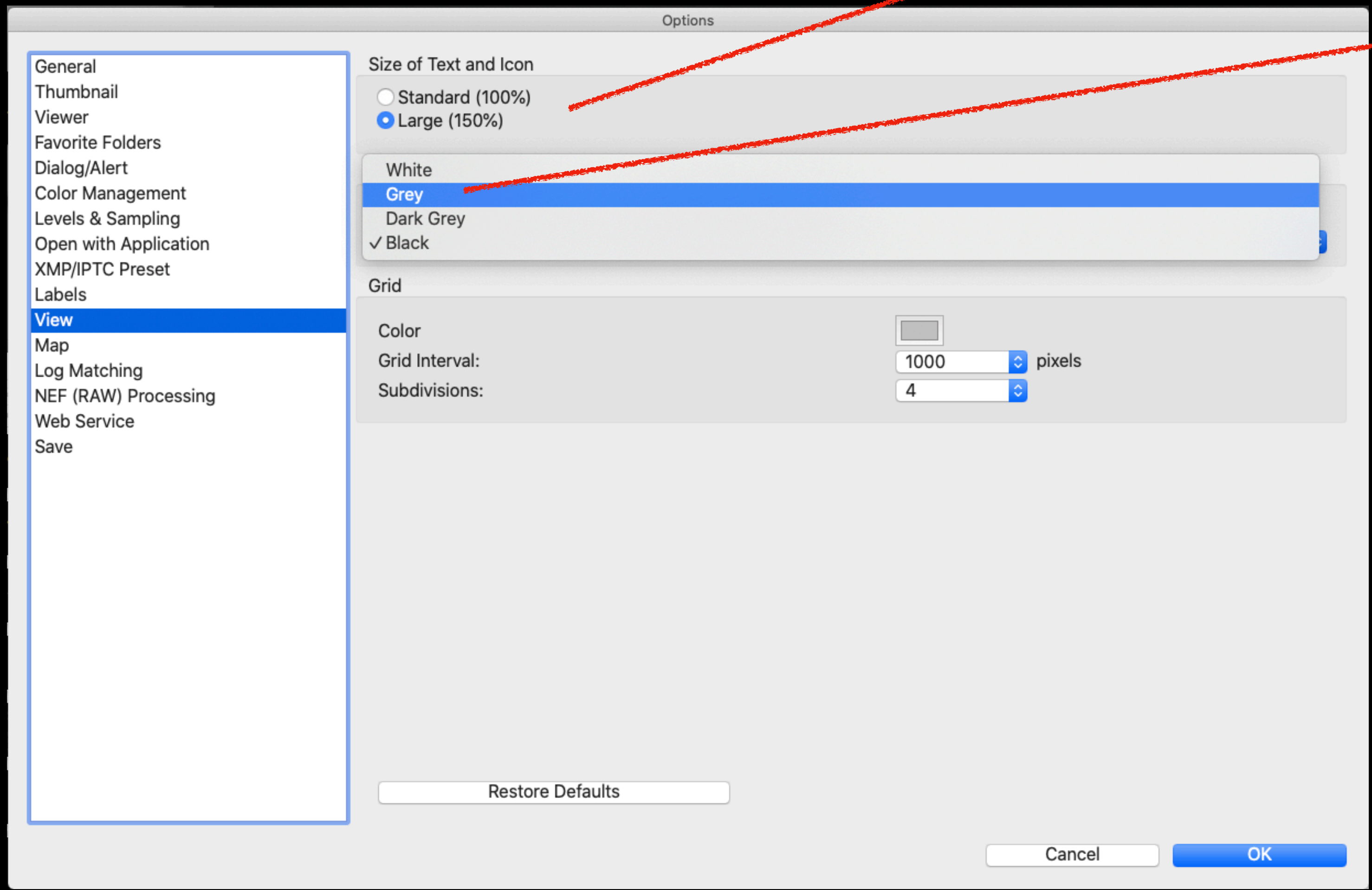
Unless you have a specific way you define "Labels" leave at default



20) "View" dialog box

"Size of Text and Icon" Select Large.

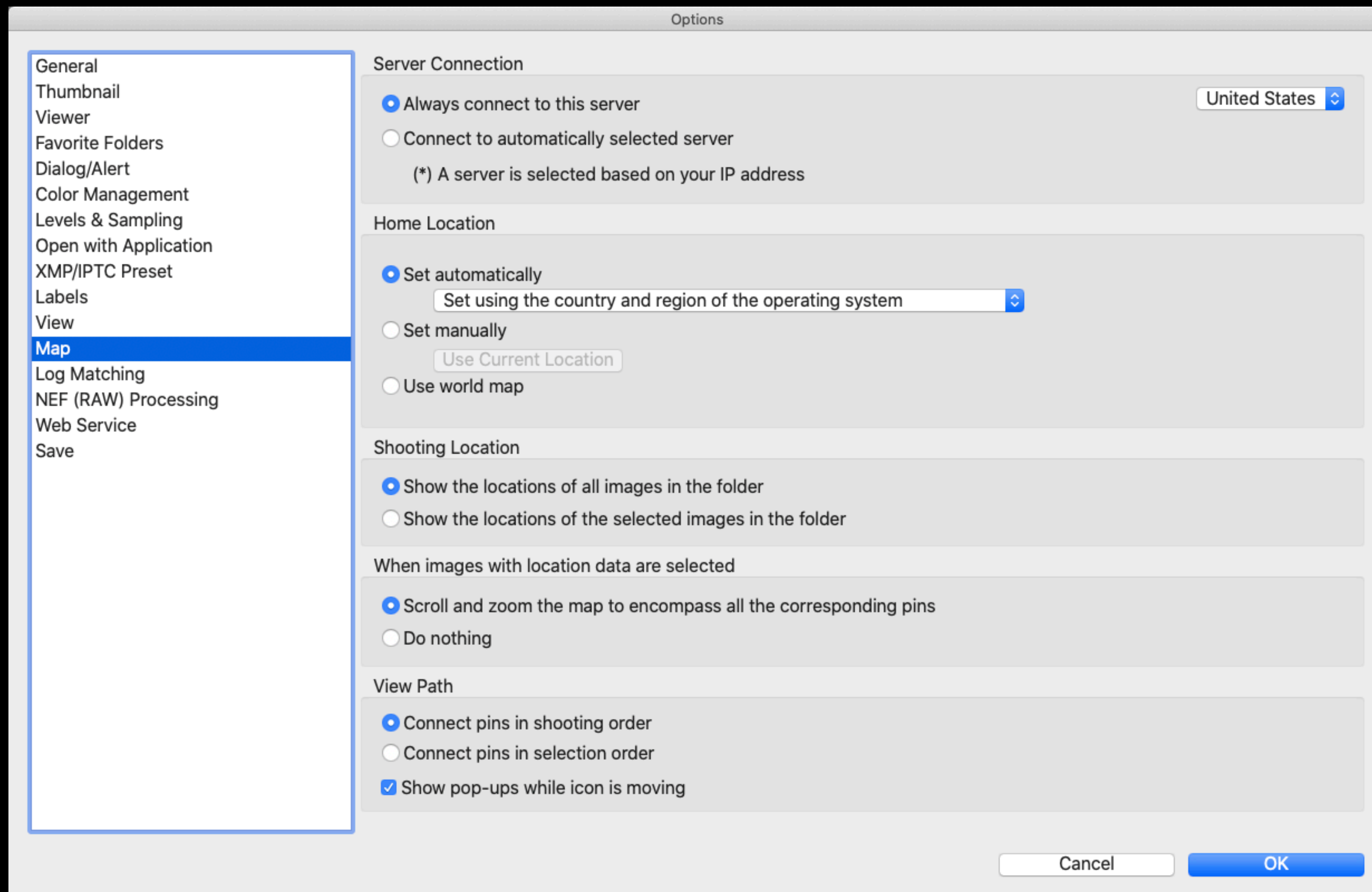
21) Set Background color to Grey



## 22) “Map”

Leave “Map” at default settings.

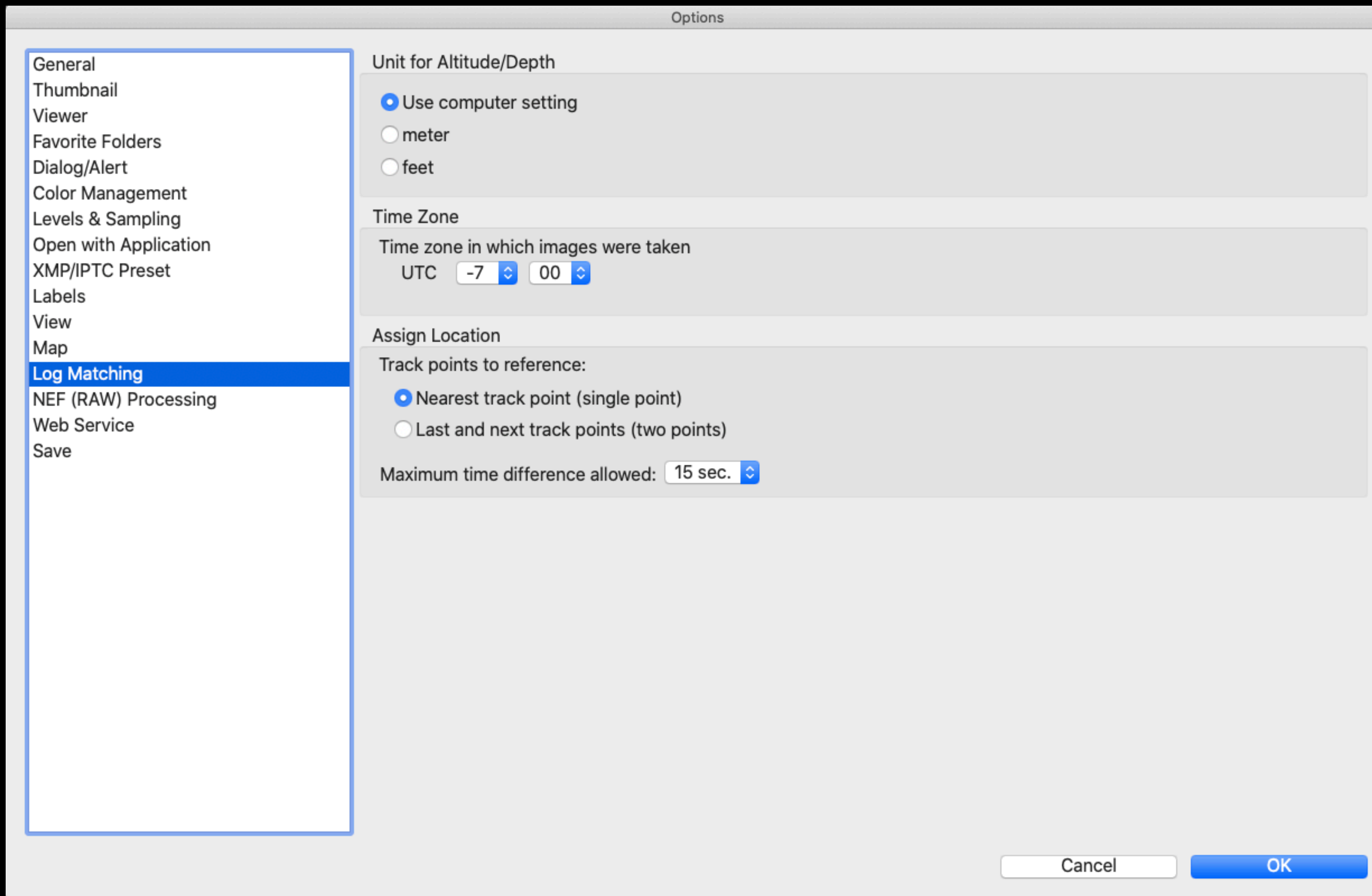
NOTE: Unless the needs of your specific workflow differs because of th way you connect to your server and how you handle location data.



## 23) “Log Matching”

Leave this at default settings.

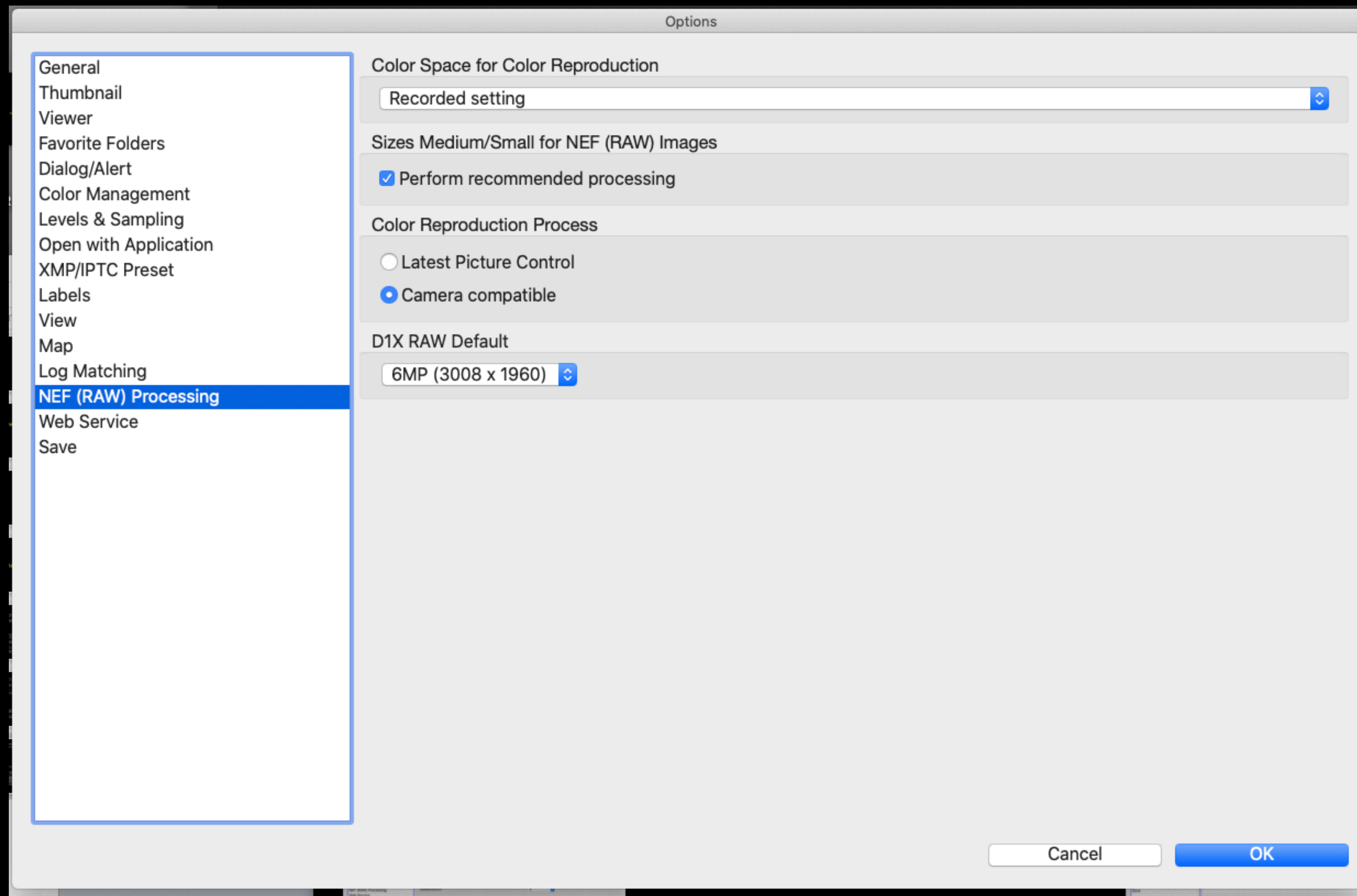
NOTE: Unless the needs of your specific workflow differs because of the way you connect to your server and how you handle location data.



## 24) In the “NEF (RAW) Processing”

Dialog box

leave “Color Space for Color Reproduction” at recorded setting.

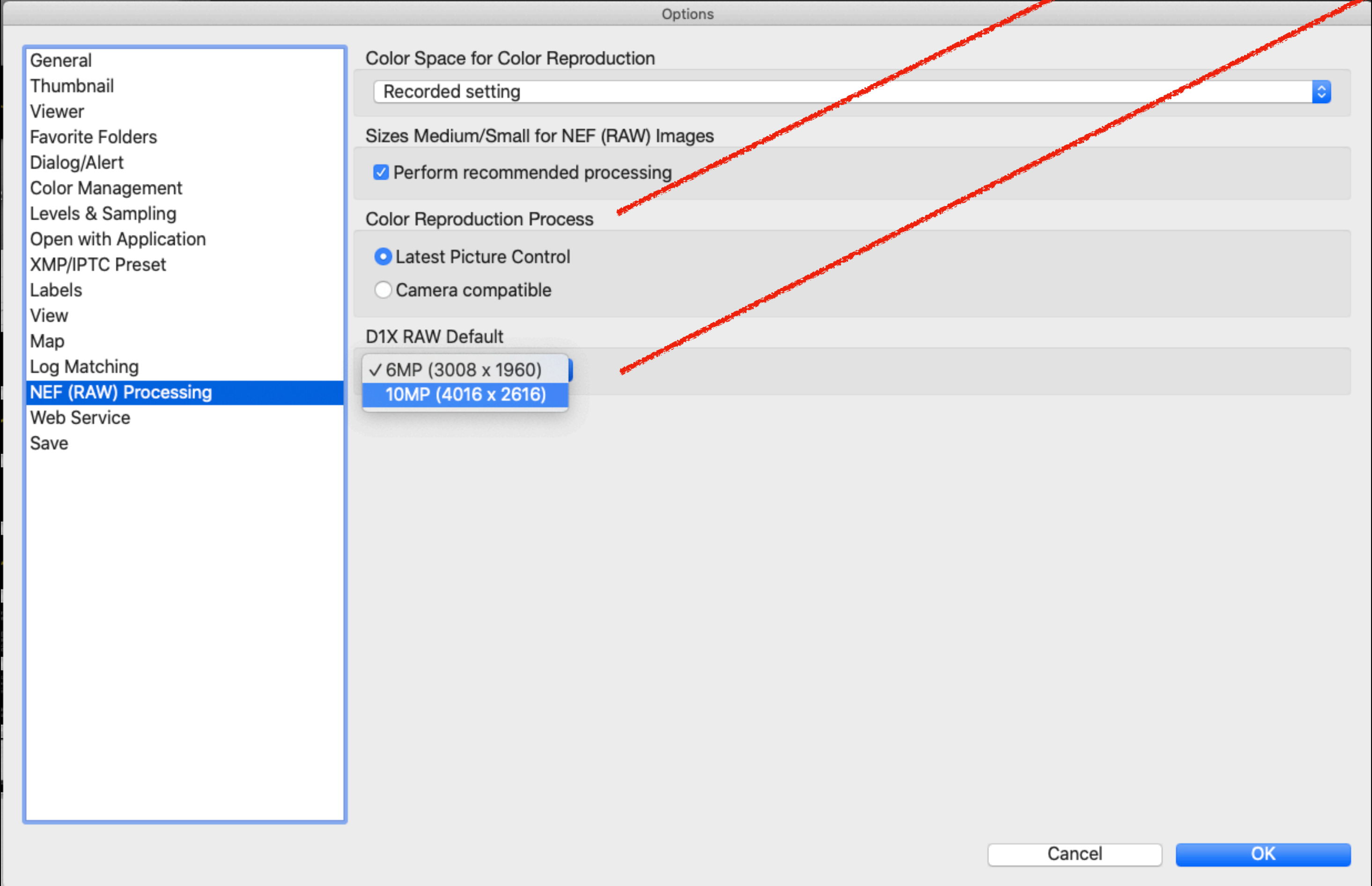


25) "Color Reproduction"

Change to Latest Picture Control

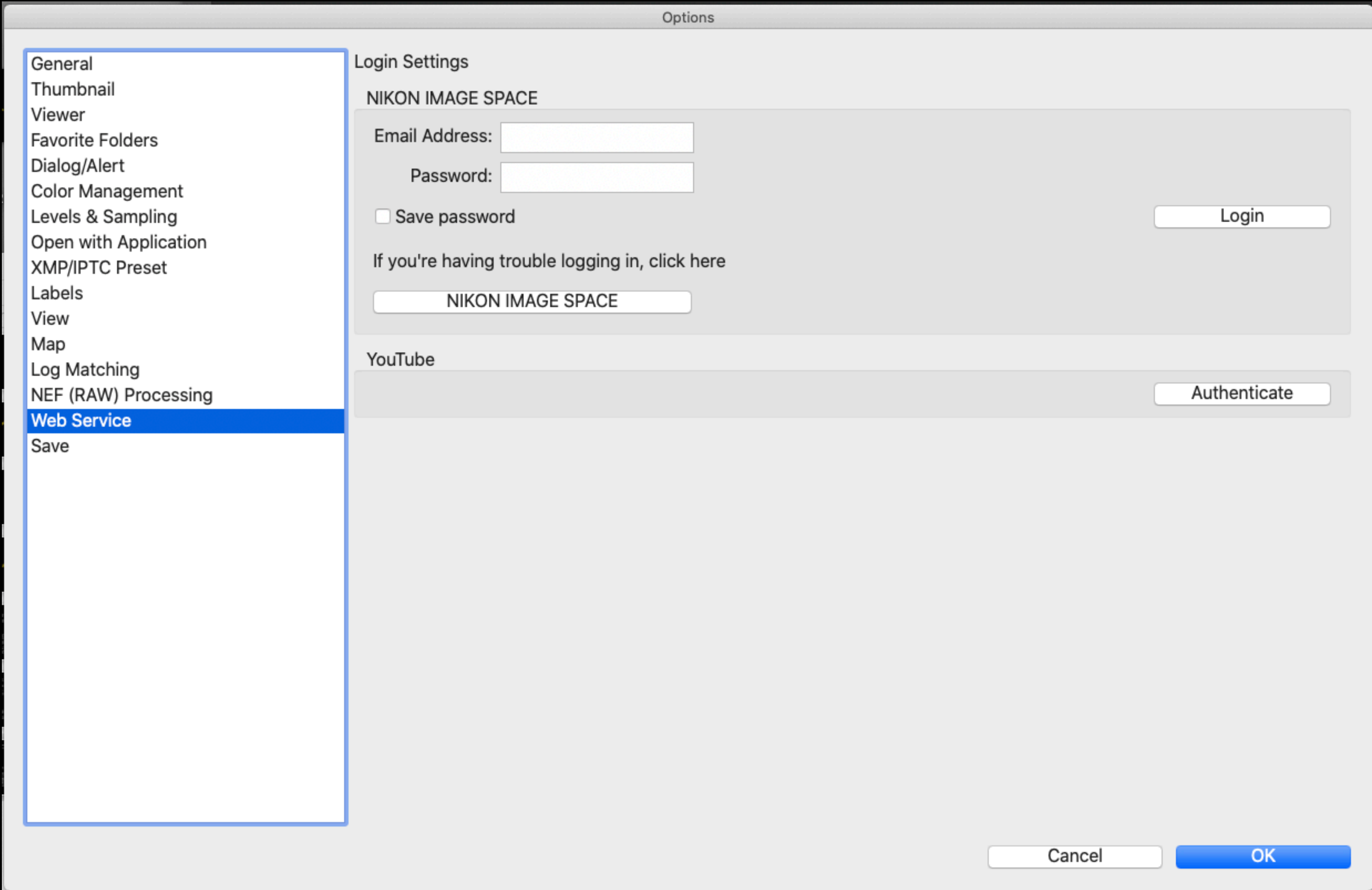
26) "D1X RAW Default"

Change to 10 MP (4016x2616)



## 27) Web Service

If you use Nikon Image Space fill out accordingly. If not then leave at default value.

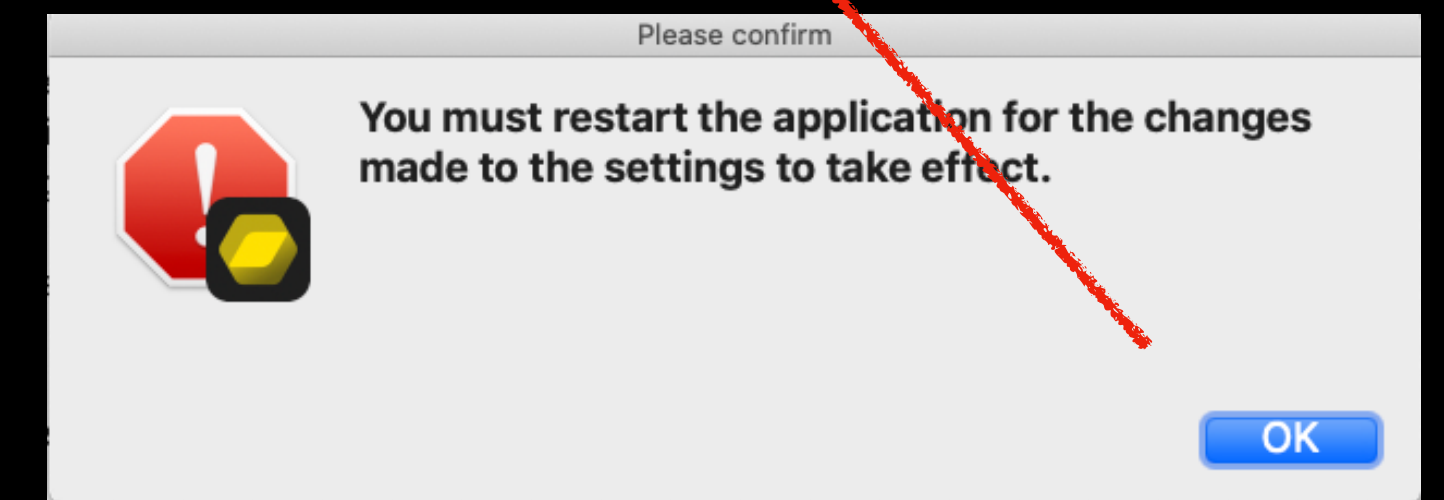
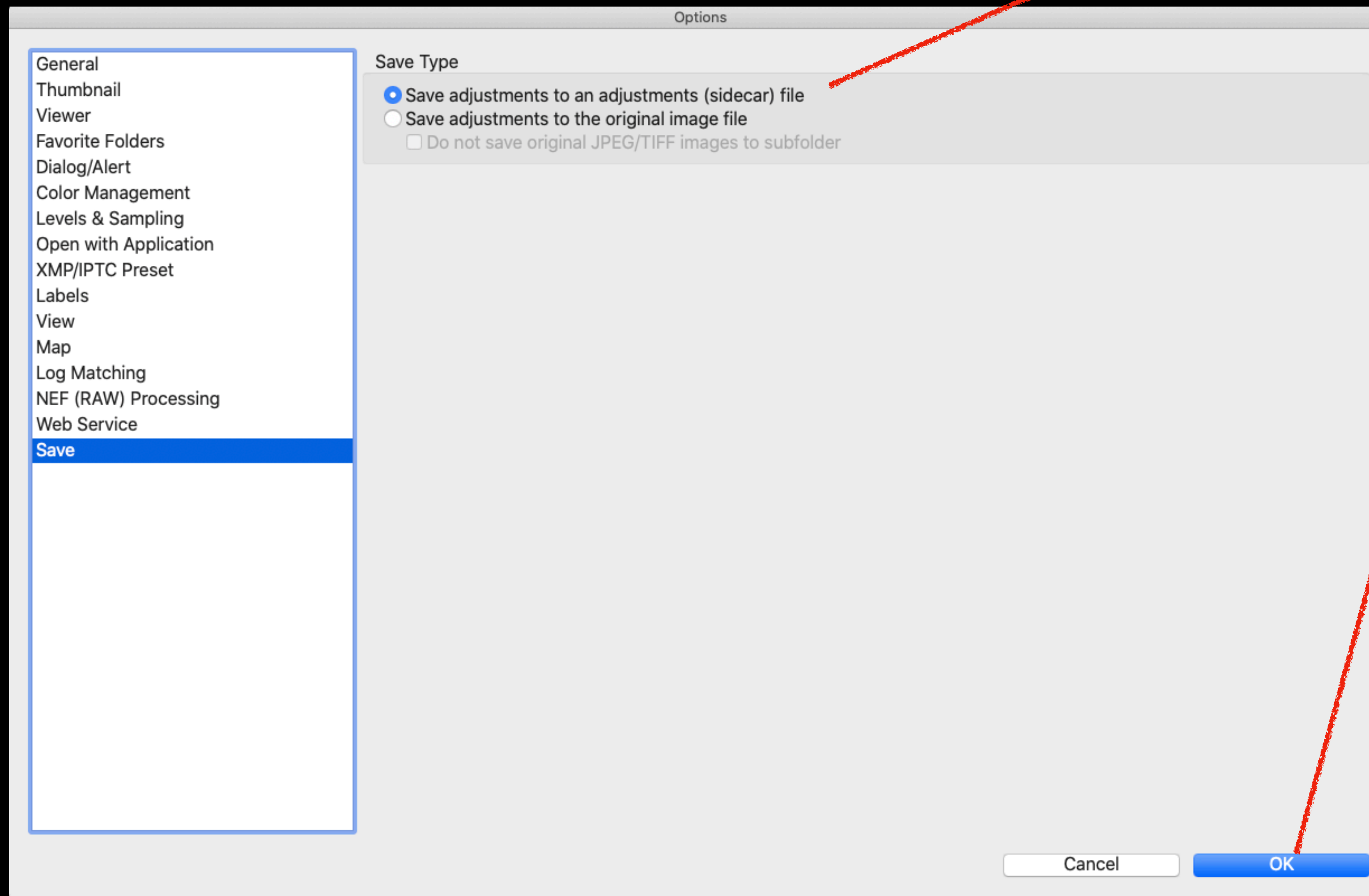


## 28) "Save"

In the "Save" dialog box select "Save adjustments to a (sidecar) file."

NOTE: When you would select "Save adjustments to the original image" is if you have plans to use JPEG/TIFF files that are bringing into NX Studio and you plan to further edit in other image editing softwares.

## 29) Click "OK" radial button then click Ok again





## 30) Quit Studio NX

NOTE: NX Studio requires a restart when you change An Option/preffrence. This is a failsafe to make sure any changes ou have made are stored.

As an aside a good universal practice is once you have changed an options/preferences (or in the case of Photoshop if you create/add an action it is good to save the action then quit and relaunch or if you add an action quit and relaunch.)

Why you do this is if for whatever reason the software crashes all of the settings and changes/ additions you have made are lost and you will have to redo everything over again.



®

VINCENT VERSACE

---

**NIKON AMBASSADOR**

UNITED STATES